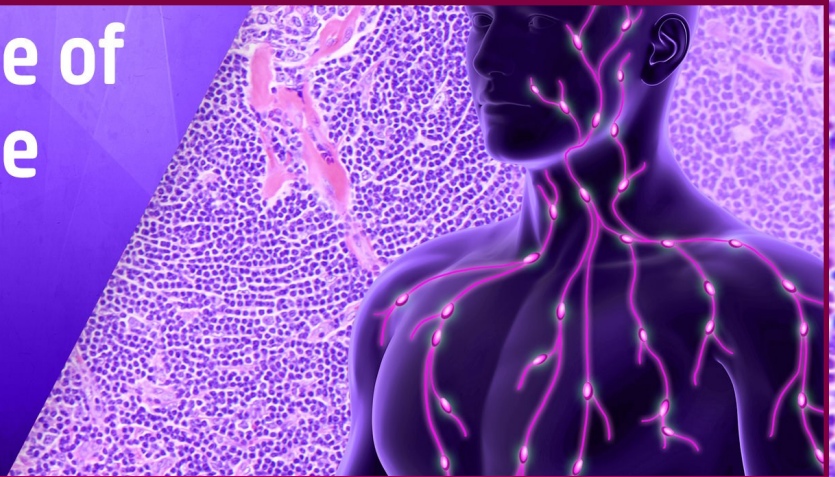


The Critical Role of Pathology in the Diagnosis of Castleman Disease



ON-DEMAND CME WEBINAR

www.paradigmmc.com/A1057

Faculty

Ahmet Dogan, MD, PhD—Chairperson

Chief, Hematopathology Service
Departments of Pathology and Laboratory Medicine
Memorial Sloan Kettering Cancer center
New York, NY

Daisy Alapat, MD

Associate Professor
University of Arkansas for Medical Services
Little Rock, AR

Amy Chadburn, MD

Professor of Pathology and Laboratory Medicine
Weill Cornell Medicine
New York, NY

Joseph Khoury, MD

Professor
Department of Hematopathology
Division of Pathology and Lab Medicine
The University of Texas MD Anderson Cancer Center

Target Audience

This activity has been designed to address the educational needs of hematopathologists and other pathologists involved in the diagnosis of Castleman disease (CD). It will also benefit other clinicians interested in the management patients with CD.

Learning Objectives

Upon completion of this activity, participants should be able to:

- Review the pathophysiology of CD, including similarities and differences among the histopathologic subtypes
- Appraise histopathologic features of CD, including variants of idiopathic MCD (iMDC), to correctly identify CD in patients
- Devise a communication plan between the pathologist and hematology/oncology clinicians regarding the need for an appropriate biopsy for an accurate diagnosis of CD

This activity is provided by Paradigm Medical Communications, LLC .



In collaboration with the Castleman Disease Collaborative Network

Disclosure of Financial Support

This activity is supported by an educational grant from EUSA Pharma (US) LLC.

Physician Accreditation Statement

Paradigm Medical Communications, LLC is accredited by the Accreditation Council for Continuing Medical Education (ACCME) to provide continuing medical education for physicians.

Paradigm Credit Designation Statement

Paradigm Medical Communications, LLC designates this enduring material for a maximum of 1.0 AMA PRA Category 1 Credit™. Physicians should claim only the credit commensurate with the extent of their participation in the activity.



European Accreditation

Through an agreement between the American Medical Association and the European Union of Medical Specialists, physicians may convert AMA PRA Category 1 Credits™ to an equivalent number of European CME Credits® (ECMEC®s). Information on the process of converting AMA PRA Category 1 Credits™ to ECMEC®s can be found at: www.eaccme.eu.

Release Date: November 5, 2021

Expiration Date: November 5, 2022

[CLICK HERE TO PARTICIPATE!](http://www.paradigmmc.com/A1057)