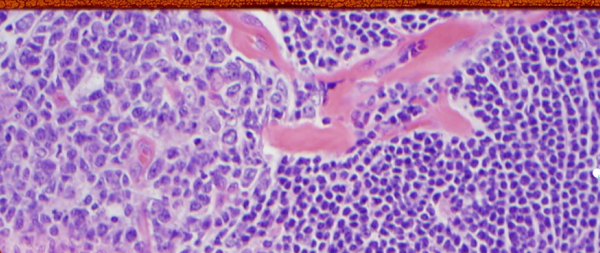
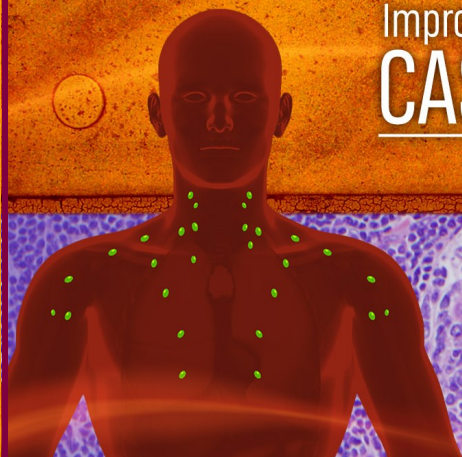


Improving the Diagnosis and Treatment of CASTLEMAN DISEASE: EXPERT INSIGHTS



ON-DEMAND CME WEBINAR

Faculty

David C. Fajgenbaum, MD, MBA, MSc

Assistant Professor of Medicine
Division of Translational Medicine and Human Genetics
University of Pennsylvania
Associate Director, Patient Impact
Penn Orphan Disease Center
Founding Director
Center for Cytokine Storm Treatment and Laboratory
Co-Founder and Executive Director
Castleman Disease Collaborative Network
Philadelphia, PA

Sudipto Mukherjee, MD, PhD, MPH

Assistant Professor of Medicine
Lerner College of Medicine at CWRU
Director of Rare Cancers and Blood Diseases Program
Department of Hematology and Medical Oncology
Leukemia Program
Taussig Cancer Institute
Cleveland Clinic
Cleveland, OH

Target Audience

This activity has been designed to address the educational needs of community and academic physicians specializing in hematology and hematology/oncology. It will also benefit other clinicians who manage patients with Castleman disease (CD).

Learning Objectives

Upon completion of this activity, participants should be able to:

- Identify patients with CD
- Determine evidence-based treatment for CD in alignment with current guidelines

This activity is provided by Paradigm Medical Communications, LLC.

In collaboration with the Castleman Disease Collaborative Network



Disclosure of Financial Support

This activity is supported by an educational grant from EUSA Pharma (US) LLC.

Physician Accreditation Statement

Paradigm Medical Communications, LLC is accredited by the Accreditation Council for Continuing Medical Education (ACCME) to provide continuing medical education for physicians.

Paradigm Credit Designation Statement

Paradigm Medical Communications, LLC designates this enduring material for a maximum of 1.0 AMA PRA Category 1 Credit™. Physicians should claim only the credit commensurate with the extent of their participation in the activity.



European Accreditation

Through an agreement between the American Medical Association and the European Union of Medical Specialists, physicians may convert AMA PRA Category 1 Credits™ to an equivalent number of European CME Credits® (ECMEC®s). Information on the process of converting AMA PRA Category 1 Credits™ to ECMEC®s can be found at: www.eaccme.eu.

Release Date: February 09, 2022

Expiration Date: February 09, 2023

Register at: www.paradigmmc.com/1058